



Cordless Circular Saw

DHS780 190 / 185 mm (7-1/2" / 7-1/4")

DHS781 190 / 185 mm (7-1/2" / 7-1/4") **AWS**



High power similar to AC tool



Up to
610 cuts
in 2 x 4 SPF lumber per charge
with 2xBL1850B (5.0Ah) batteries

18V + 18V → 36V + **BL MOTOR**

Dust nozzle

is attachable for connecting to vacuum cleaner.



Max cutting capacity at 0°

190mm (7-1/2") Blade

68.5 mm
(2-11/16")

185mm (7-1/4") Blade

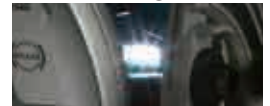
66 mm
(2-5/8")

Blower function



Bevel adjustment with positive stops at 22.5, 45 degrees.

Twin LED Job light



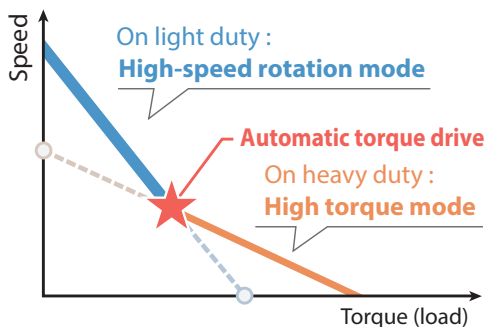
Max. bevel capacity



ADT Automatic torque Drive Technology

automatically changes the cutting speed according to load conditions for an optimum operation:

- On light duty: high-speed rotation mode
- On heavy duty: high torque mode



AWS Auto-start Wireless System (DHS781 only)

The wireless activation function enables clean and comfortable operation. By connecting a supported tool to the cleaner, you can run the cleaner automatically along with the switch operation of the tool.



Wireless unit is compatible with all supported tools

Bluetooth® AWS connects to power tool with Bluetooth

The Bluetooth® word mark and logos are registered trademarks owned by the Bluetooth SIG, Inc. and any use of such marks by Makita is under license. Other trademarks and trade names are those of their respective owners.

Accessories

Specialized EFFICUT blade



Size (mm)	Part No.
185 x 1.45 x 20 x 24T	B-62022
190 x 1.45 x 30 x 24T	B-64185

Hook set

3"x lumber (65mm) width



Part No. 199386-8

Cordless Circular Saw

DHS780 / DHS781 190 / 185 mm (7-1/2" / 7-1/4")

	DHS780 / DHS781	
Brake	190 / 185 mm (7-1/2" / 7-1/4")	
Soft Start	15.88 (5/8") / 20 / 30 mm	
Built-in Job Light	Max Cutting Capacity	
	90°: 68.5 / 66 mm (2-11/16" / 2-5/8")	
	45°: 47.5 / 45.5 mm (1-7/8" / 1-13/16")	
Carrying Case	56°: 35.5 / 34 mm (1-3/8" / 1-5/16")	
	No Load Speed (RPM)	6,000
	Dimensions (L x W x H)	342x200x290 mm (13-1/2"x7-7/8"x11-3/8")
	Net weight	4.2 - 4.8 kg (9.3 - 10.7 lbs.)

Standard Equipment: TCT Saw Blade, Dust Nozzle, Hex Wrench, Battery, Charger

The weight may differ depending on the attachment(s), including the battery cartridge. The lightest and heaviest combination, according to EPTA-Procedure 01/2014, are shown in the table. Items of standard equipment and specifications may vary by country or area.

Makita Corporation

3-11-8 Sumiyoshi-cho, Anjo, Aichi, 446-8502 Japan

PRINTED IN JAPAN 201808